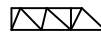
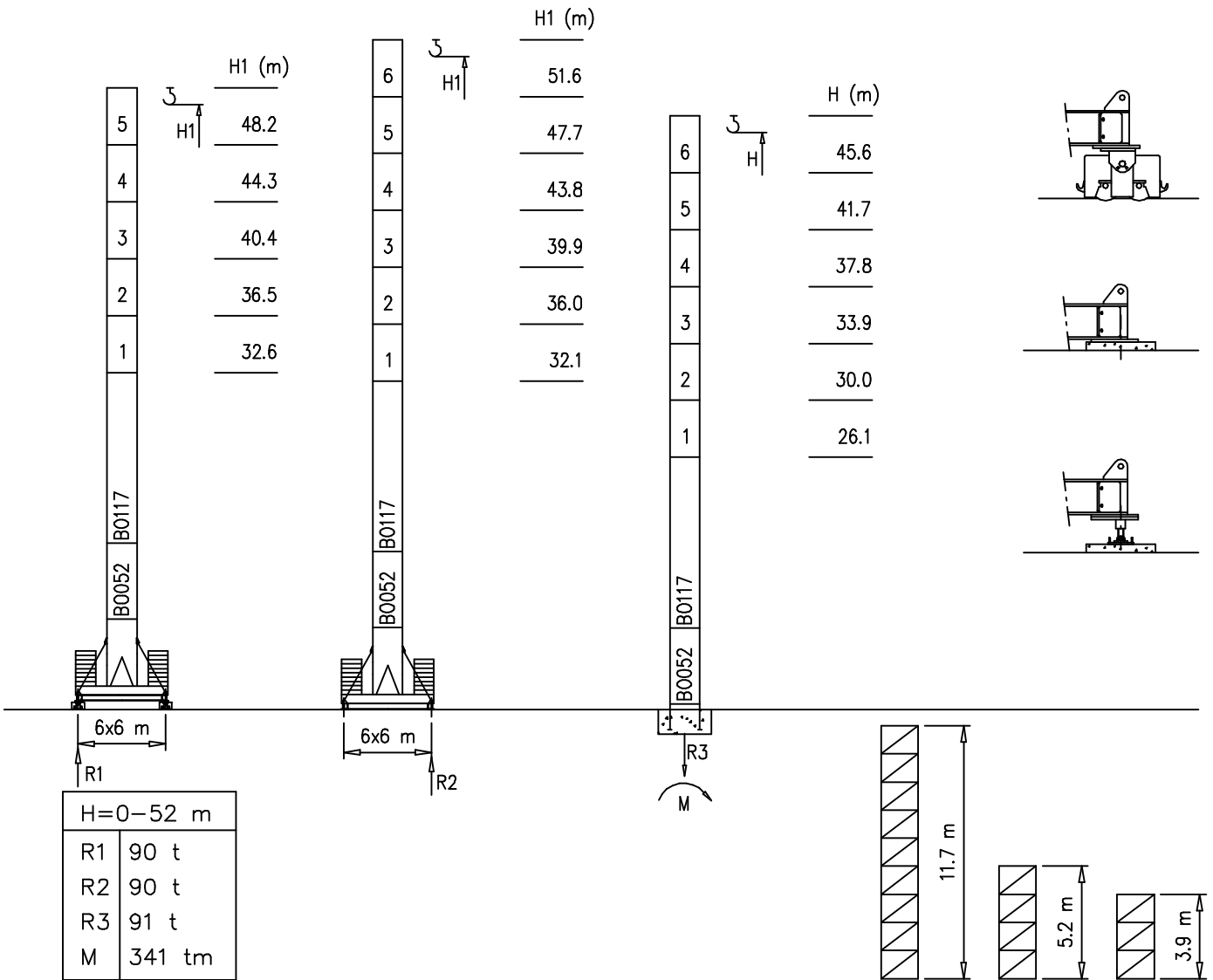


- S2050 - 2.05x2.05 m
- M2500 - 2.50x2.50 m

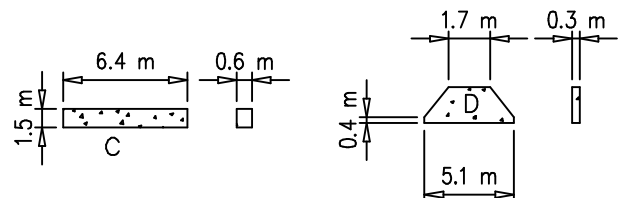
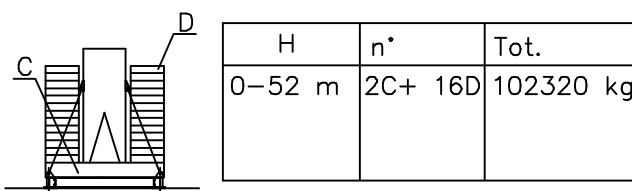
Torre/Reazioni – Masts/Reactions – Mat/Réactions – Maste/Eckdrücke – Măstil/Reacciones – Tramo/Reacções

S2050

 68.8 m → 80 m

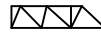


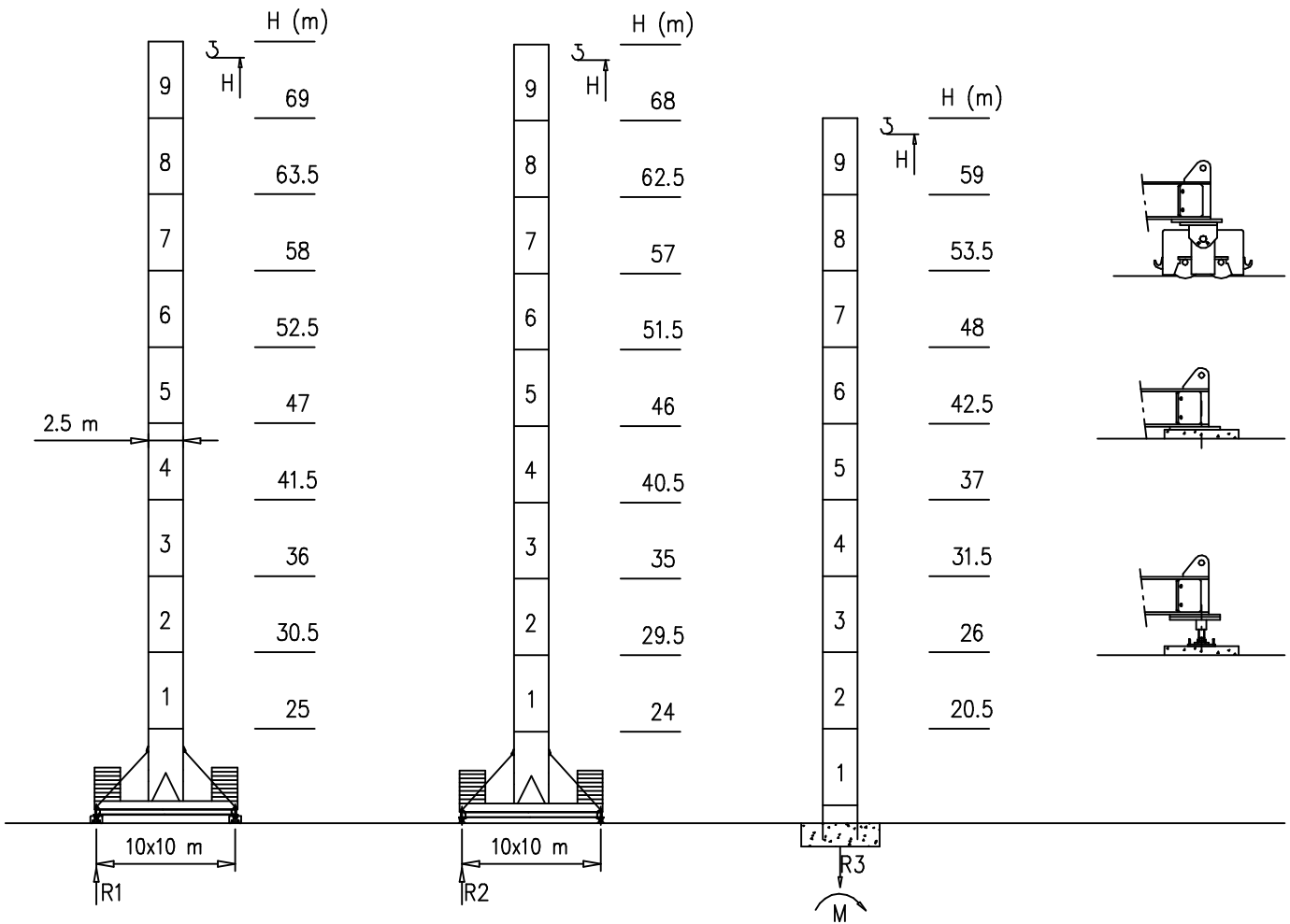
Peso zavorra – Ballast weight – Poids du lest – Ballastgewicht – Peso de lastre



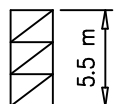
Torre/Reazioni – Masts/Reactions – Mat/Réactions – Maste/Eckdrücke – Măstil/Reacciones – Tramo/Reacções

M2500

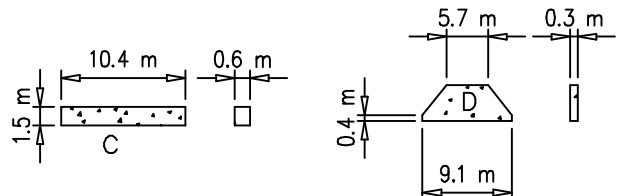
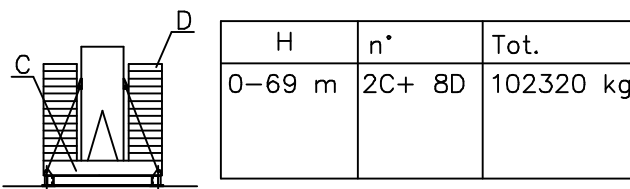
 68.8 m → 80 m



H=0–48 m		H>48m
R1	120 t	Contact us
R2	120 t	
R3	150 t	
M	634 tm	

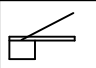

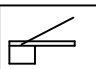
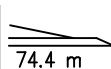
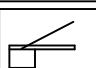

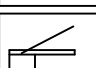
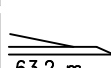


Peso zavorra – Ballast weight – Poids du lest – Ballastgewicht – Peso de lastre

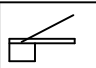
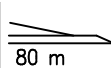
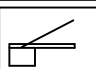
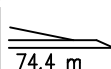
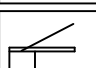

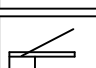
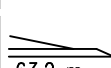


Curve di carico – Courbes de charges – Load diagrams – LastKurven – Curvas de cargas

Pmax 12000/6000 kg

	31900 kg		3.5	36	40	44	48	52	56	60	62	64	66	68	70	72	74	76	80	m	
			6000	6000	5400	4700	4200	3800	3500	3200	3000	2800	2700	2500	2400	2300	2200	2150	2000	kg	
	31900 kg		3.5	40	44	48	52	56	60	62	64	66	68	70	72	74.4	m				
			6000	6000	5400	4900	4350	4000	3500	3300	3200	3050	2900	2800	2700	2600	kg				
	29000 kg		3.5	44	48	52	56	60	62	64	66	68.8	m								
			6000	6000	5450	4900	4300	4000	3700	3500	3400	3300	kg								
	26100 kg		3.5	44	48	52	56	60	62	63.2	m										
			6000	6000	5500	5000	4500	4100	3900	3700	kg										

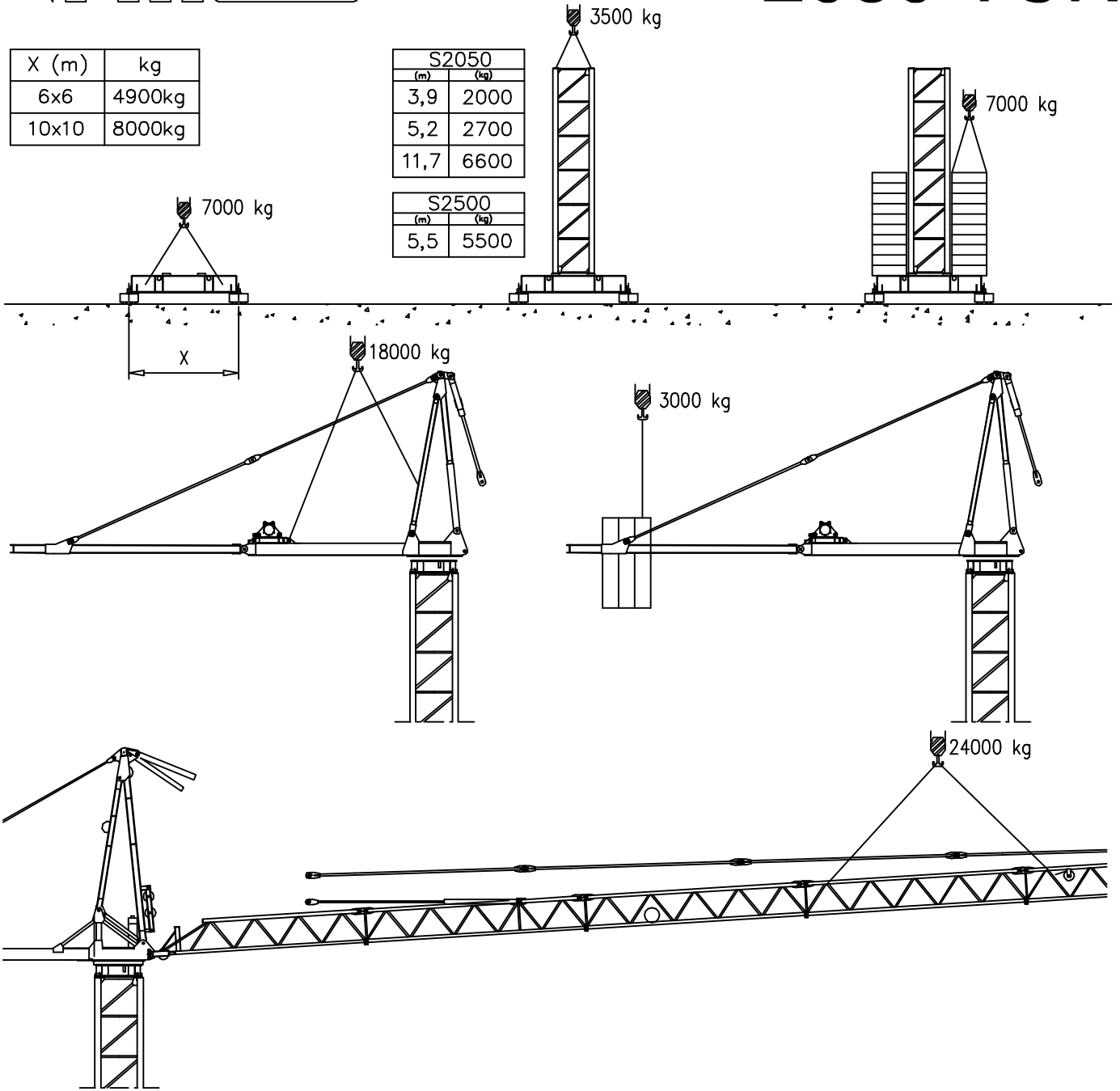
Pmax 12000/6000 kg

	31900 kg		3.5	18	22	26	28	32	36	40	44	48	52	56	60	62	64	66	68	70	72	74	76	80	m
			12000	11000	8500	7500	6800	6000	5400	4700	4200	3800	3500	3200	3000	2800	2700	2500	2400	2300	2200	2150	2000	kg	
	31900 kg		3.5	21	22	26	28	32	36	40	44	48	52	56	60	62	64	66	68	70	72	74.4	m		
			12000	11000	9800	9000	7800	7000	6000	5400	4900	4350	4000	3500	3300	3200	3050	2900	2800	2700	2600	kg			
	29000 kg		3.5	24	26	28	32	36	40	44	48	52	56	60	62	64	66	68.8	m						
			12000	11000	10000	9000	7800	7000	6000	5450	4900	4300	4000	3700	3500	3400	3300	kg							
	26100 kg		3.5	24	26	28	32	36	40	44	48	52	56	60	62	63.2	m								
			12000	11000	10500	9200	8000	7000	6000	5500	5000	4500	4100	3900	3700	kg									

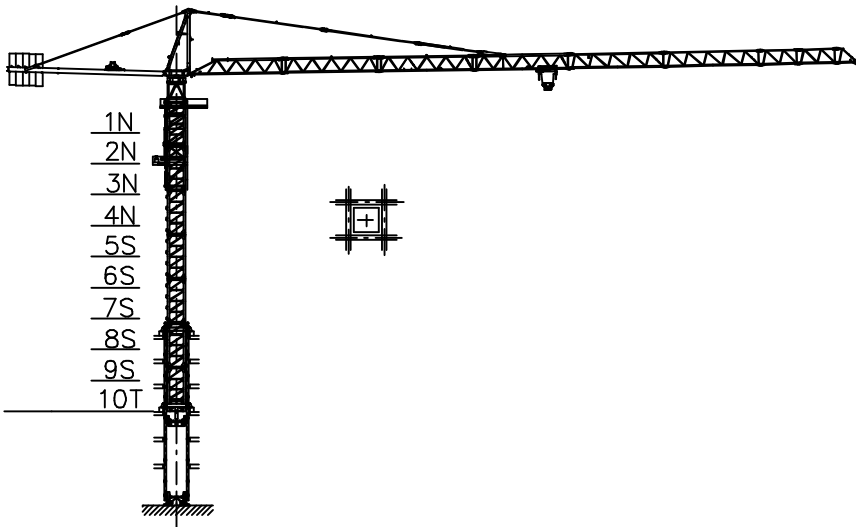
X (m)	kg
6x6	4900kg
10x10	8000kg

S2050	
(m)	(kg)
3,9	2000
5,2	2700
11,7	6600

S2500	
(m)	(kg)
5,5	5500



Gru in cavedio - Climbing crane - Télescopage sur dalles - Kletterkrane in Gebäude - Telescopage gruas trepadoras - Telescopagem sobre lages



Number of tower section	H (m.)
5S+2N+T	33.40
5S+3N+T	37.30
5S+4N+T	41.20

N = Standard mast element
 T = Telescopic element
 S = Special mast element

Meccanismi – Mechanisms – Mécanismes – Antriebe – Mecanismos

Sollevamento V45.60 Hoisting Elevaciòn	▲ ● ▼		1a	2 m/min	6000 kg	33 kW	V45.60 61 kVA
			2a	20 m/min	6000 kg		
			3a	31 m/min	5000 kg		
			4a	46 m/min	3600 kg		
			5a	60 m/min	2600 kg		
			1a	1 m/min	12000 kg		
			2a	10 m/min	12000 kg		
			3a	15 m/min	10000 kg		
			4a	23 m/min	7200 kg		
			5a	30 m/min	5200 kg		
Sollevamento V80.100 Hoisting Elevaciòn	▲ ● ▼		1a	2 m/min	6000 kg	60 kW	V80.100 93 kVA
			2a	40 m/min	6000 kg		
			3a	60 m/min	4000 kg		
			4a	80 m/min	3000 kg		
			5a	100 m/min	2600 kg		
			1a	1 m/min	12000 kg		
			2a	20 m/min	12000 kg		
			3a	30 m/min	8000 kg		
			4a	40 m/min	6000 kg		
			5a	50 m/min	5200 kg		
Carrello Trolleying Distribuciòn	◀■▶		1a	5 m/min	12000 kg	5.5 kW	Potenza elettrica necessaria Puissance électrique nécessaire Necessary electric power Anschlusswert – Potencia
			2a	40 m/min	12000 kg		
			3a	80 m/min	6000 kg		
Rotazione Slewing Orientaciòn			1a	0 → 0.2	giri/min tr/min rp/min	8.8 kW @ 1200rpm n° 4 x 2.2 kW	
			2a	0 → 0.6			
			3a	0 → 0.9			
Traslazione Travelling Traslaciòn	◀■▶		1a	0 → 5		9 kW	
			2a	0 → 20			

Rete elettrica – Réseau – Mains supply – Netzstrom – Red – Rede electrica 400V – 50 Hz



2000/14/CE
FEM 1.001



Documento commerciale non contrattuale
Per tutte le informazioni tecniche riferirsi
alle corrispondenti istruzioni

Unverbindliches Vertriebsdokument.
Für technische Informationen, siehe die
entsprechenden Anweisungen.

This commercial document is not legally
binding. For any technical information, please
refer to the corresponding instructions.

Documento comercial no contractual
Para cualquier información técnica,
ver la noticia correspondiente.

Code: 15/CA37MB7A0		
Ed.	Data	Rev Data
1	05.06.03	0