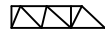
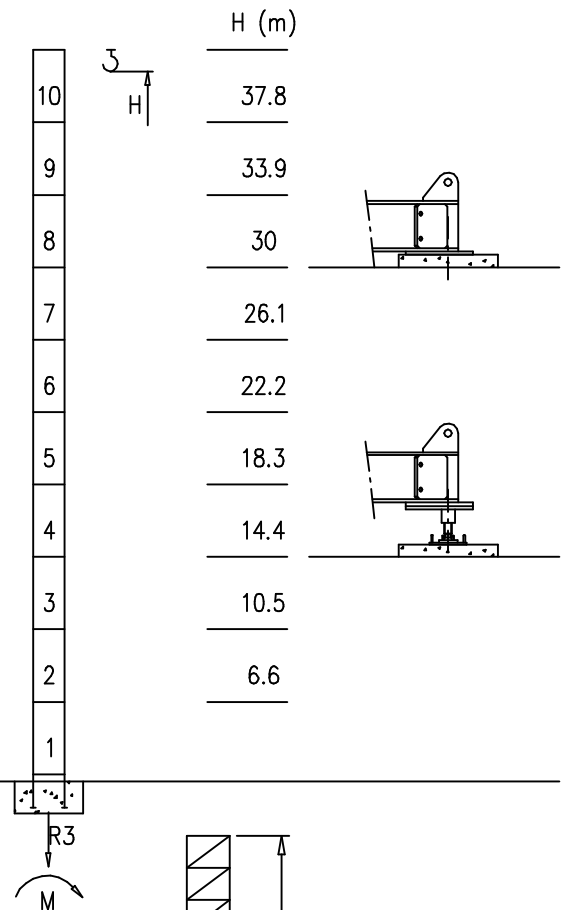
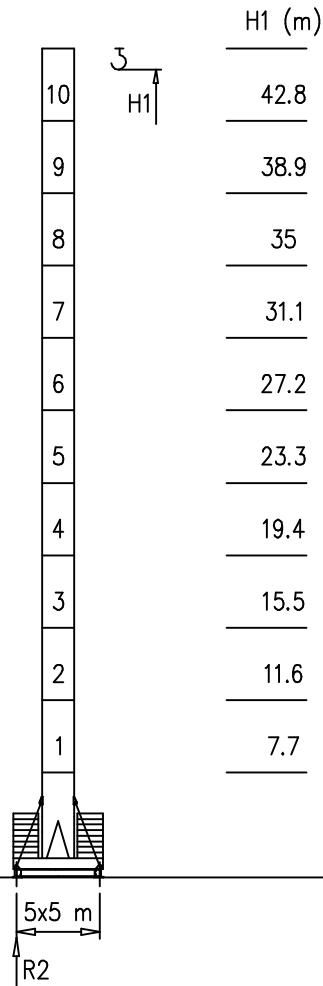


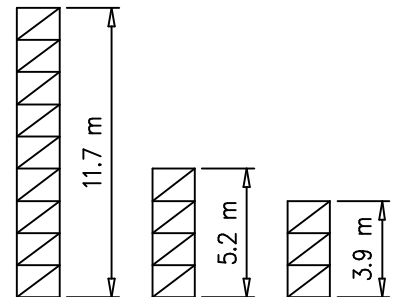
Torre/Reazioni – Masts/Reactions – Mat/Réactions – Maste/Eckdrücke – Mástil/Reacciones – Tramo/Reacções

S1700

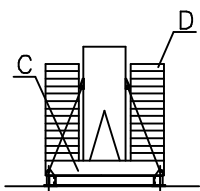
 45 m \rightarrow 65 m



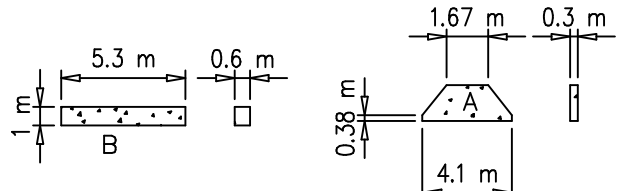
H=0-43 m	
R1	
R2	106 t
R3	95 t
M	336 tm



Peso zavorra – Ballast weight – Poids du lest – Ballastgewicht – Peso de lastre



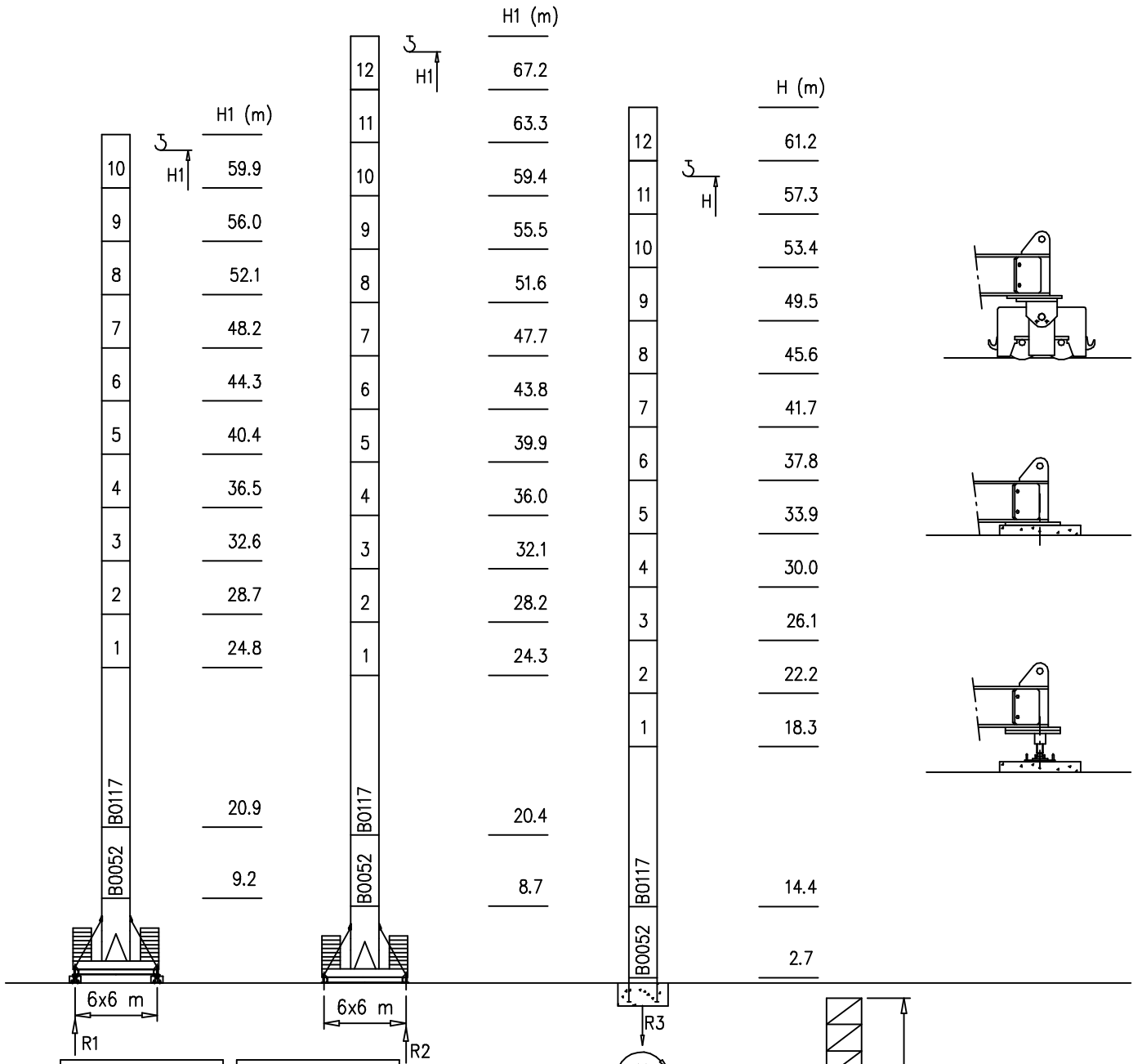
H	n°	Tot.
0-43 m	2C+32D	105000 kg



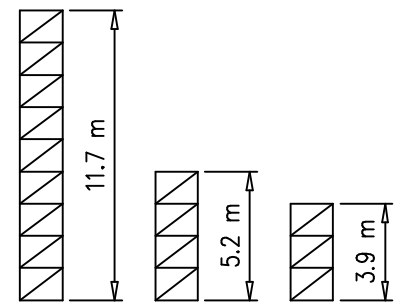
Torre/Reazioni – Masts/Reactions – Mat/Réactions – Maste/Eckdrücke – Mástil/Reacciones – Tramo/Reacções

S2050

45 m → 65 m

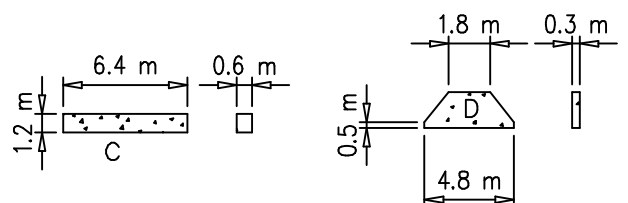


H=46–58 m		H=0–45 m	
R1	90 t	R1	89 t
R2	90 t	R2	88 t
R3	91 t	R3	63 t
M	341 tm	M	185 tm



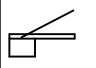
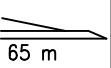
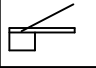
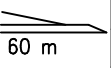
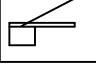
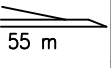
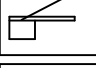
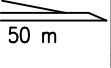
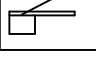
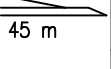
Peso zavorra – Ballast weight – Poids du lest – Ballastgewicht – Peso de lastre

H	n°	Tot.
0–55 m	2C+ 16D	102320 kg
56–67 m	2C+ 18D	112610 kg



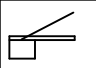
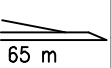
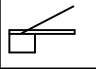
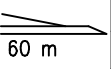
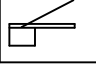
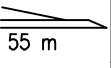
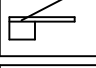
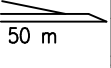
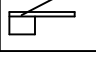
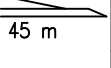
Curve di carico – Courbes de charges – Load diagrams – LastKurven – Curvas de cargas

Pmax 5000 kg

	28400 kg		3.5	35	36	38	40	42	44	46	48	50	52	54	56	58	60	62	65	m
			5000	5000	4900	4500	4200	3900	3700	3500	3400	3200	2900	2800	2700	2600	2100	1800	1700	kg
	28400 kg		3.5	35	36	38	40	42	44	46	48	50	52	54	56	58	60	m		
			5000	5000	4900	4500	4200	3900	3700	3500	3400	3200	2900	2800	2700	2600	2500	kg		
	25560 kg		3.5				38	40	42	44	46	48	50	52	54	55	m			
			5000				5000	4700	4400	4000	3800	3600	3500	3300	3200	3000	kg			
	22720 kg		3.5				38	40	42	44	46	48	50	m						
			5000				5000	4700	4400	4000	3800	3600	3500	kg						
	19880 kg		3.5				38	40	42	44	45	m								
			5000				5000	4700	4400	4150	4000	kg								



Pmax 10000/5000 kg

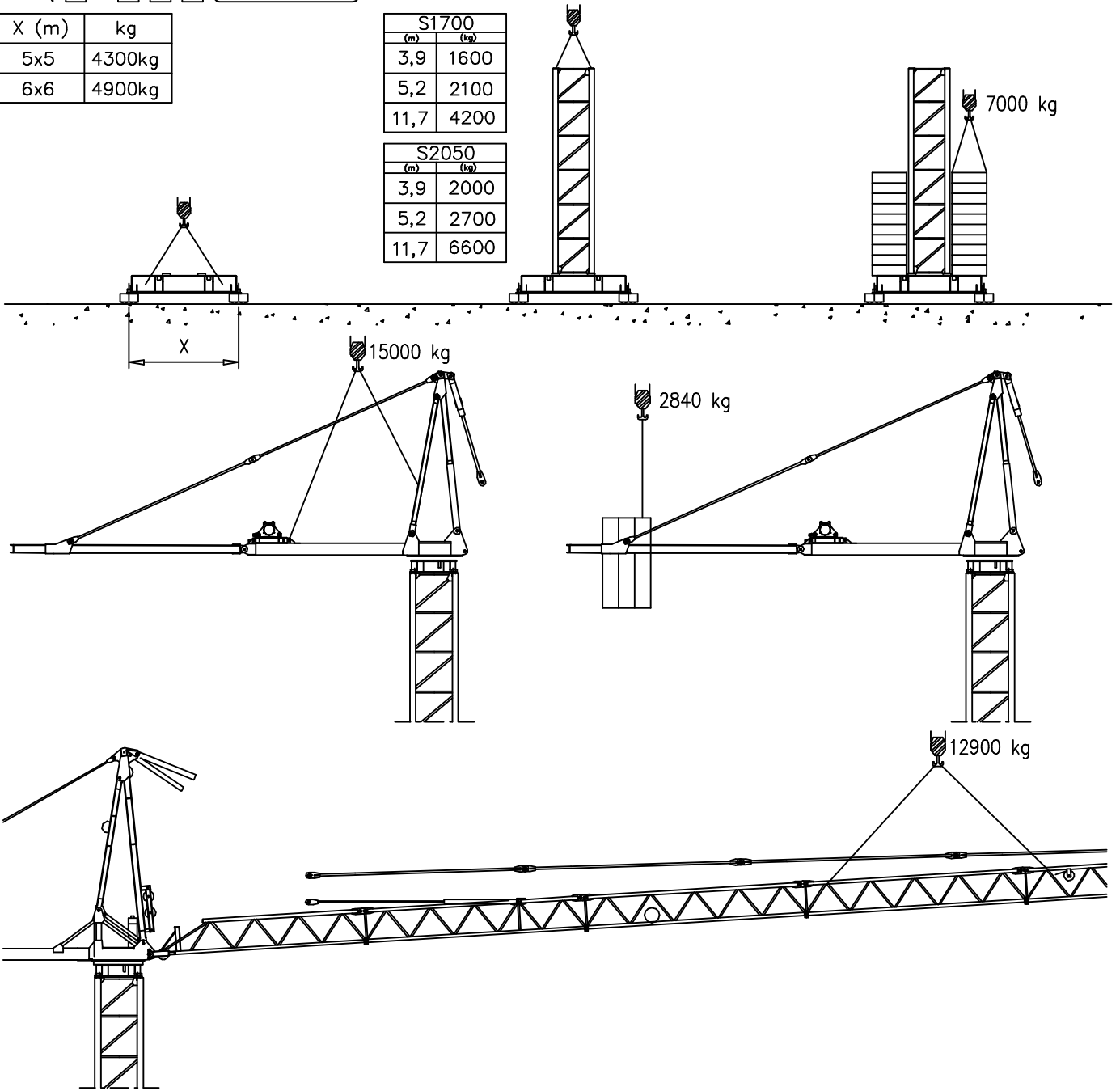
	28400 kg		3.5	20	22	26	30	32	34	36	38	40	42	44	46	48	50	52	54	56	58	60	62	65	m
			10000	8900	7400	6000	5600	5300	4900	4500	4200	3900	3700	3500	3400	3200	2900	2800	2700	2600	2100	1800	1700	kg	
	28400 kg		3.5	20	22	26	30	32	34	36	38	40	42	44	46	48	50	52	54	56	58	60	m		
			10000	8900	7400	6000	5600	5300	4900	4500	4200	3900	3700	3500	3400	3200	2900	2800	2700	2600	2500	kg			
	25560 kg		3.5	20	22	26	30	32	34	36	38	40	42	44	46	48	50	52	54	55	m				
			10000	9800	8200	7000	6300	5900	5500	5000	4700	4400	4000	3800	3600	3500	3300	3200	3000	kg					
	22720 kg		3.5	20	22	26	30	32	34	36	38	40	42	44	46	48	50	m							
			10000	9800	8200	7000	6300	5900	5500	5000	4700	4400	4000	3800	3600	3500	kg								
	19880 kg		3.5	22	24	26	30	32	34	36	38	40	42	44	45	m									
			10000	9700	8950	7300	6800	6100	5700	5000	4700	4400	4150	4000	kg										



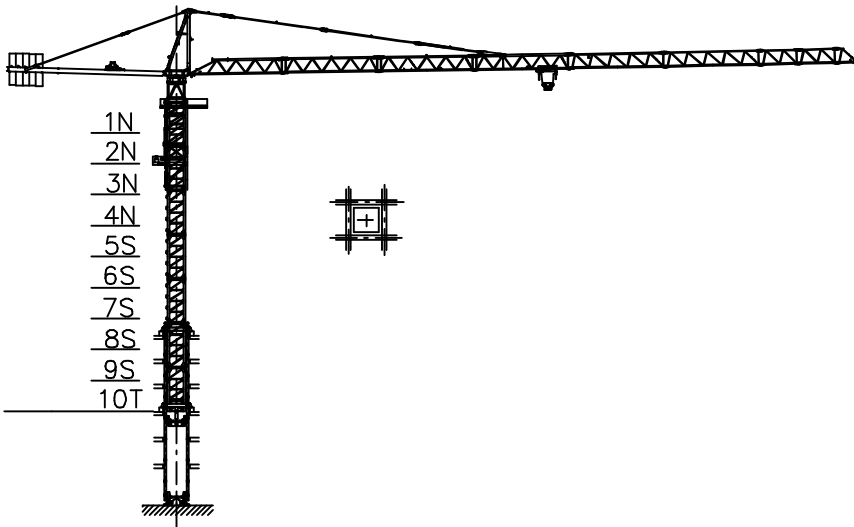
X (m)	kg
5x5	4300kg
6x6	4900kg

S1700	
(m)	(kg)
3,9	1600
5,2	2100
11,7	4200

S2050	
(m)	(kg)
3,9	2000
5,2	2700
11,7	6600



Gru in cavedio - Climbing crane - Télescopage sur dalles - Kletterkrane in Gebäude - Telescopage gruas trepadoras - Telescopagem sobre lages



Number of tower section	H (m.)
5S+2N+T	33.40
5S+3N+T	37.30
5S+4N+T	41.20

N = Standard mast element
 T = Telescopic element
 S = Special mast element

Meccanismi – Mechanisms – Mécanismes – Antriebe – Mecanismos

Sollevamento V40.60 Hoisting Levage Heben Elevaciòn Elevaçao	▲ ▼		1a	2 m/min	5000 kg	30 kW	V40.60 54 kVA
			2a	20 m/min	5000 kg		
			3a	31 m/min	4500 kg		
			4a	46 m/min	3000 kg		
			5a	60 m/min	2250 kg		
			1a	1 m/min	10000 kg		
			2a	10 m/min	10000 kg		
			3a	15 m/min	9000 kg		
			4a	23 m/min	6000 kg		
			5a	30 m/min	5000 kg		
Sollevamento V60.100 Hoisting Levage Heben Elevaciòn Elevaçao	▲ ▼		1a	2 m/min	5000 kg	45 kW	V60.100 72 kVA
			2a	40 m/min	5000 kg		
			3a	60 m/min	3500 kg		
			4a	80 m/min	2600 kg		
			5a	100 m/min	2200 kg		
			1a	1 m/min	10000 kg		
			2a	20 m/min	10000 kg		
			3a	30 m/min	7000 kg		
			4a	40 m/min	5200 kg		
			5a	50 m/min	4400 kg		
Carrello Trolleying Distribution Katzfahren Distribuciòn Distribuiçao	◀ ▶		1a	8 m/min	10000 kg	5.5 kW	Potenza elettrica necessaria Puissance électrique nécessaire Necessary electric power Anschlusswert – Potencia
			2a	40 m/min	10000 kg		
			3a	80 m/min	5000 kg		
Rotazione Slewing Orientation Schwenken Orientaciòn Rotaçao			1a	0 → 0.2	giri/min tr/min rp/min	6.6 kW @ 1200rpm n° 3 x 2.2 kW	
			2a	0 → 0.6			
			3a	0 → 0.9			
Traslazione Travelling Translation Kranfahren Traslaciòn Tranlação	◀ ▶		1a	0 → 5	9 kW		
			2a	0 → 20			

Rete elettrica – Réseau – Mains supply – Netzstrom – Red – Rede electrica 400V – 50 Hz

	FEM 1.001 2000/14/CE	
--	-------------------------	--



Documento commerciale non contrattuale
Per tutte le informazioni tecniche riferirsi
alle corrispondenti istruzioni

Unverbindliches Vertriebsdokument.
Für technische Informationen, siehe die
entsprechenden Anweisungen.

This commercial document is not legally
binding. For any technical information, please
refer to the corresponding instructions.

Documento comercial no contractual
Para cualquier información técnica,
ver la noticia correspondiente.

Code: 15ICA37K45A0			
Ed.	Data	Rev	Data
1	05.06.03	0	05.06.03